

DUCT CONNECTED -High Static pressure-

FDU



FDU 71/100/125/140

Remote control (Option)

Wired

Wireless



RC-EX1A



RC-E5



RCH-E3



RCN-KIT3-E

Point 1

Automatic external static pressure (E.S.P.) control

You can set External Static Pressure (E.S.P.) by method of manual setting on remote control.

Please refer to page 5

Point 3

Reduction of sound pressure level

	Previous	Current	Lo mode
FDU71	37	➔ 25	12dB less!!
FDU100	38	➔ 30	8dB less!!

Point 2

Transparent inspection window

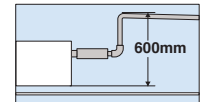
Dirt condition of the bottom of a drain pan can be checked through this transparent inspection window without removing drain pan.

Please refer to page 5

Point 4

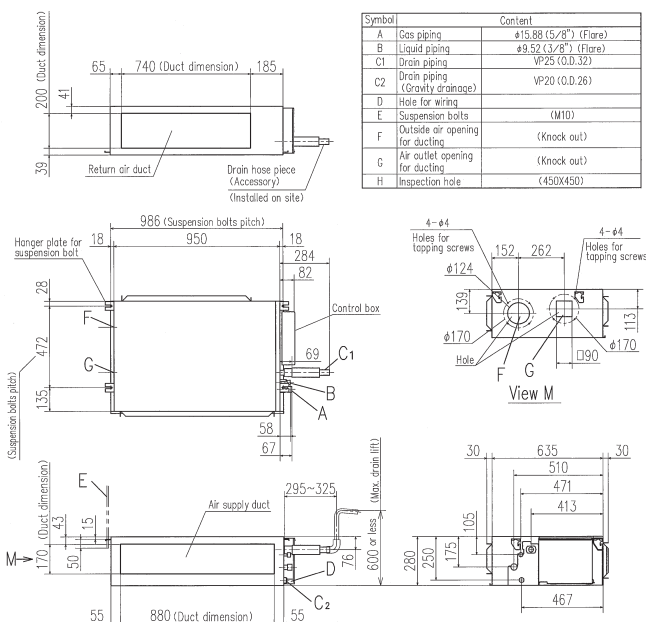
Enhanced installation workability

600mm Drain Pump is mounted in FDU71/100/125/140. The indoor unit is completely hidden in the ceiling, so this is suitable for spaces with classy interior decoration.

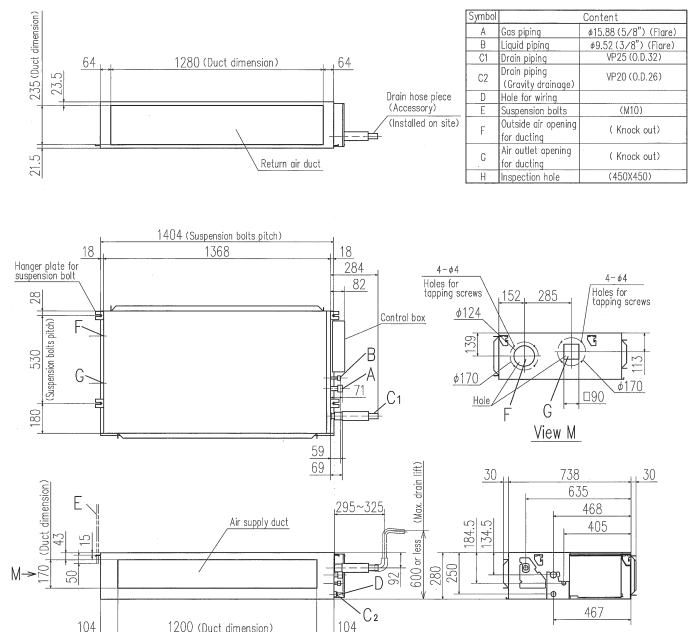


Dimensions (Unit:mm)

Model FDU71VF1



Models FDU100VF1,125VF,140VF



SPECIFICATIONS

		<i>HyperInverter</i>			
Set model name		FDU71VNXVF1	FDU100VNXVF1	FDU125VNXVF	FDU140VNXVF
Indoor unit		FDU71VF1	FDU100VF1	FDU125VF	FDU140VF
Outdoor unit		FDC71VNX	FDC100VNX	FDC125VNX	FDC140VNX
Power source		1 Phase 220-240V 50Hz, 1 Phase 220V 60Hz			
Nominal cooling capacity (Min~Max)		kW 7.1 (3.2 ~ 8.0)	10.0 (4.0 ~ 11.2)	12.5 (5.0 ~ 14.0)	14.0 (5.0 ~ 16.0)
Nominal heating capacity (Min~Max)		kW 8.0 (3.6 ~ 9.0)	11.2 (4.0 ~ 12.5)	14.0 (4.0 ~ 17.0)	16.0 (4.0 ~ 18.0)
Power consumption		Cooling/Heating kW 2.05 / 2.01	2.68 / 3.02	3.49 / 3.77	4.28 / 4.42
EER/COP		Cooling/Heating 3.46 / 3.98	3.73 / 3.71	3.58 / 3.71	3.27 / 3.62
Inrush current		220/230/240 V A 5	5	5	5
Max. running current		17	25	29	30
Sound power level*1	Indoor	Cooling/Heating 65 / 65	65 / 65	67 / 67	70 / 70
	Outdoor	Cooling/Heating 66 / 66	70 / 70	70 / 70	72 / 72
Sound pressure level*1 ※	Indoor	Cooling (Hi/Me/Lo) dB(A) 33 / 29 / 25	38 / 36 / 30	40 / 34 / 29	40 / 35 / 30
		Heating (Hi/Me/Lo) 33 / 29 / 25	38 / 36 / 30	40 / 34 / 29	40 / 35 / 30
	Outdoor	Cooling/Heating 51 / 48	48 / 50	48 / 50	49 / 52
		Cooling (Hi/Me/Lo) 19 / 15 / 10	28 / 25 / 19	32 / 26 / 20	35 / 28 / 22
Air flow ※	Indoor	Heating (Hi/Me/Lo) m ³ /min 19 / 15 / 10	28 / 25 / 19	32 / 26 / 20	35 / 28 / 22
	Outdoor	Cooling/Heating 60 / 50	100 / 100	100 / 100	100 / 100
External static pressure*2		Pa Standard:35 Max:200	Standard:60 Max:200		
Exterior dimensions	Indoor	HeightxWidthxDepth mm	280 x 950 x 635		
	Outdoor		750 x 880(+88) x 340		
Net weight	Indoor	kg	34		
	Outdoor		60		
Ref.piping size		Liquid/Gas ømm	9.52(3/8") / 15.88(5/8")		
Refrigerant line (one way) length		m	Max.50	Max.100	
Vertical height differences		Outdoor is higher/lower m	Max.30 / Max.15		
Outdoor operating temperature range		Cooling °C	-15~43*3		
		Heating	-20~20		
Air filter		Procure locally			
Remote control (option)		wired:RC-EX1A, RC-E5, RCH-E3 wireless:RCN-KIT3-E			

SPECIFICATIONS

		<i>HyperInverter</i>			
Set model name		FDU100VSXVF1	FDU125VSXVF	FDU140VSXVF	
Indoor unit		FDU100VF1	FDU125VF	FDU140VF	
Outdoor unit		FDC100VSX	FDC125VSX	FDC140VSX	
Power source		3 Phase 380-415V 50Hz, 3 Phase 380V 60Hz			
Nominal cooling capacity (Min~Max)		kW 10.0 (4.0 ~ 11.2)	12.5 (5.0 ~ 14.0)	14.0 (5.0 ~ 16.0)	
Nominal heating capacity (Min~Max)		kW 11.2 (4.0 ~ 16.0)	14.0 (4.0 ~ 18.0)	16.0 (4.0 ~ 20.0)	
Power consumption		Cooling/Heating kW 2.68 / 3.02	3.49 / 3.77	4.28 / 4.42	
EER/COP		Cooling/Heating 3.73 / 3.71	3.58 / 3.71	3.27 / 3.62	
Inrush current		220/230/240 V A 5	5	5	
Max. running current		16	18	19	
Sound power level*1	Indoor	Cooling/Heating 65 / 65	67 / 67	70 / 70	
	Outdoor	Cooling/Heating 70 / 70	70 / 70	72 / 72	
Sound pressure level*1 ※	Indoor	Cooling (Hi/Me/Lo) dB(A) 38 / 36 / 30	40 / 34 / 29	40 / 35 / 30	
		Heating (Hi/Me/Lo) 38 / 36 / 30	40 / 34 / 29	40 / 35 / 30	
	Outdoor	Cooling/Heating 48 / 50	48 / 50	49 / 52	
		Cooling (Hi/Me/Lo) 28 / 25 / 19	32 / 26 / 20	35 / 28 / 22	
Air flow ※	Indoor	Heating (Hi/Me/Lo) m ³ /min 28 / 25 / 19	32 / 26 / 20	35 / 28 / 22	
	Outdoor	Cooling/Heating 100 / 100	100 / 100	100 / 100	
External static pressure*2		Pa	Standard:60 Max:200		
Exterior dimensions	Indoor	HeightxWidthxDepth mm	280 x 1,370 x 740		
	Outdoor		1,300 x 970 x 370		
Net weight	Indoor	kg	54		
	Outdoor		105		
Ref.piping size		Liquid/Gas ømm	9.52(3/8") / 15.88(5/8")		
Refrigerant line (one way) length		m	Max.100		
Vertical height differences		Outdoor is higher/lower m	Max.30 / Max.15		
Outdoor operating temperature range		Cooling °C	-15~43*3		
		Heating	-20~20		
Air filter		Procure locally			
Remote control (option)		wired:RC-EX1A, RC-E5, RCH-E3 wireless:RCN-KIT3-E			

The data are measured under the following conditions(ISO-T1).

Cooling:Indoor temp. of 27°CDB, 19°CWB, and outdoor temp. of 35°CDB. Heating:Indoor temp. of 20°CDB, and outdoor temp. of 7°CDB, 6°CWB.

External static pressure is 35Pa(71), 60Pa (100/125/140).

*1 : Indicates the value in an anechoic chamber. During operation these values are somewhat higher due to ambient conditions.

*2 : External static pressure is changeable to be set by the remote control. MAX external static pressure is "High static pressure" setting. The values of sound pressure level become 5dB(A) higher at external static pressure of 200Pa.

*3 : If a cooling operation is conducted when the outdoor air temperature is -5°C or lower, the outdoor unit should be installed at a place where it is not influenced by natural wind. If wind blows, the low pressure will drop and compressor frequency will increase, this will cause the capacity to drop and may cause the unit to break down.

※ Powerful-Hi can be selected. Sound level: 71VNXVF1 38dB, 100VN(S)XVF1 44dB, 125VN(S)XVF 45dB, 140VN(S)XVF 47dB

Air flow: 71VNXVF1 24m³/min, 100VN(S)XVF1 36m³/min, 125VN(S)XVF 39m³/min, 140VN(S)XVF 48m³/min